


Search



No screenshot available

## OpenCPN-4.x

### A Chartplotter and GPS Navigation Software (Full with Plugins)

OpenCPN is a free software (GPLV2) project to create a concise chartplotter and navigation software for use as an underway or planning tool. OpenCPN is developed by a team of active sailors using real world conditions for program testing and refinement.  
This meta package calls for OpenCPN-4.0-Base and all associated plugins.

<a href="#">openSUSE Tumbleweed</a>					
<a href="#">openSUSE Leap 42.1</a>					
Application:Geo:Open...	4.2.0	↓	64 Bit	Source	<a href="#">1 Click Install</a>
Application:Geo:Open...	4.0.0	↓	64 Bit	Source	<a href="#">1 Click Install</a>
home:dominig:opencpn...	4.2.0	↓	64 Bit	Source	<a href="#">1 Click Install</a>
<a href="#">openSUSE 13.2</a>					

Under Firefox browser (not Chrome) locate the OpenSUSE OpenCPN repo. A search for OpenCPN OpenSUSE will do it in less than 3 clicks.

Select the one click install.

When starting OpenCPN, you still get an error.

```

dominig : bash — Konsole
File Edit View Bookmarks Settings Help
dominig@linux-jg78:~> opencpn
opencpn: relocation error: opencpn: symbol _ZTV21wxSizerItemListNode, version WXU_3.0 not defined in file libwx_gtk2u_core-suse.so.1 with link time reference
dominig@linux-jg78:~> opencpn
opencpn: relocation error: /usr/lib64/libwx_gtk2u_core-suse.so.1: symbol _ZN28_WX_LIST_HELPER_wxObjectList9EmptyListE, version WXU_3.0 not defined in file libwx_baseu-suse.so.1 with link time reference

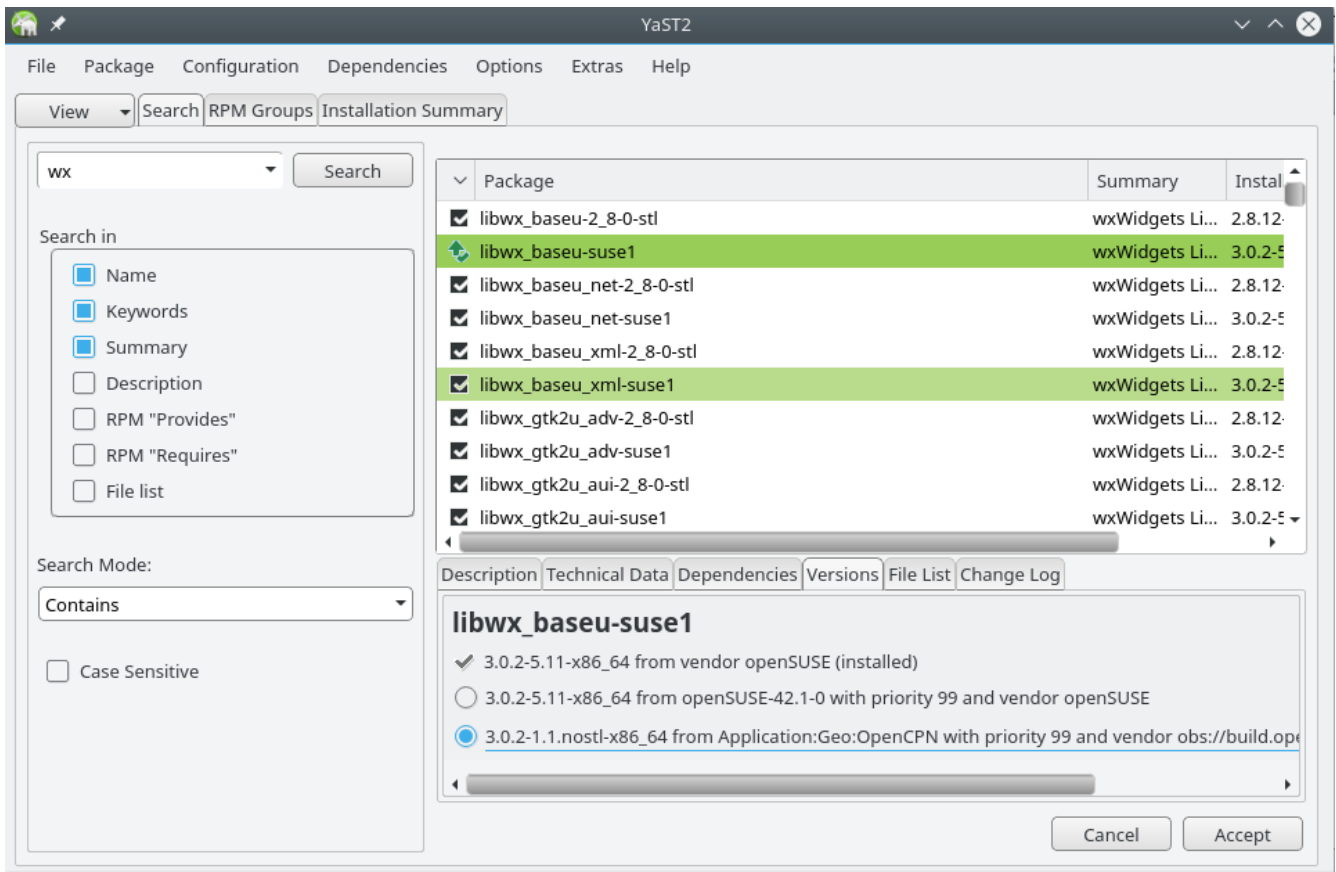
```

Unfortunately, there are so many ways to build wx that many apps require their own and OpenCPN pre-dating stl is one of those.

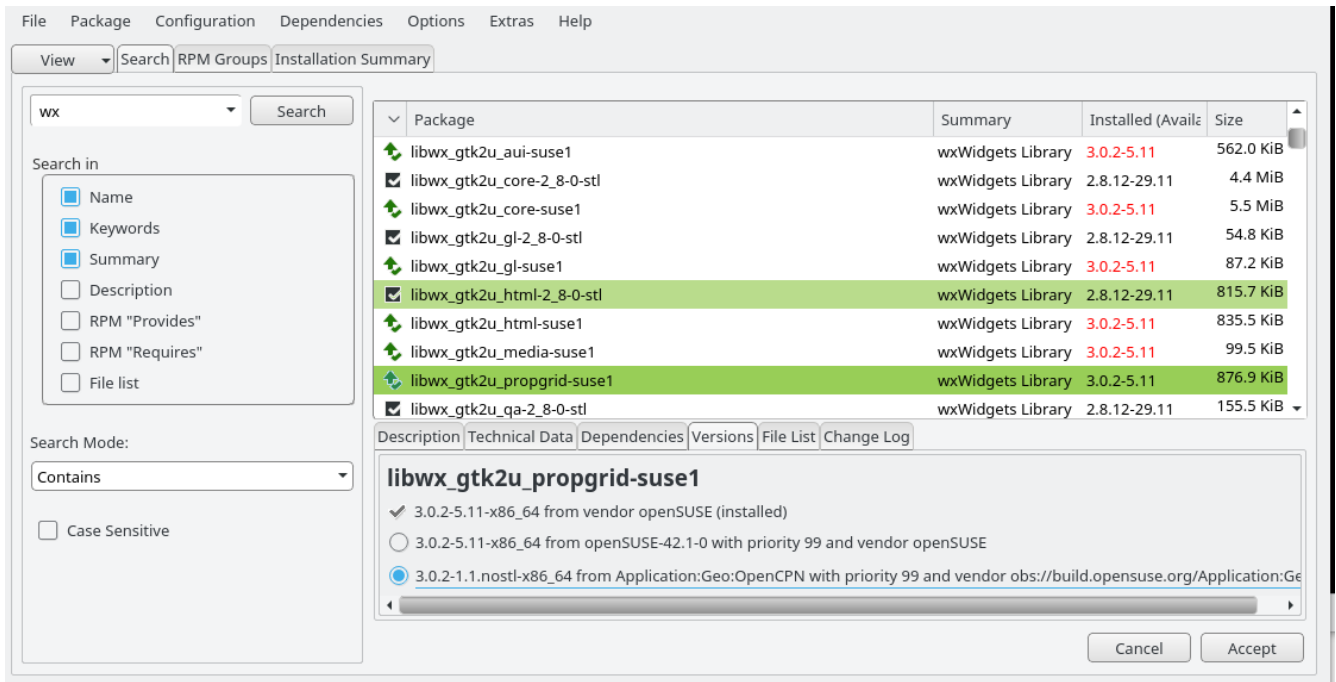
The solution is simple, we will replace the default OpenSUSE provided wx lib by those built for OpenCPN. To do so, we need to change some defaults in YAST.

Launch YAST and select Software management.

Locate wx lib with the filter wx.



For each wx lib showing the installed version 3.0 → click on version and force the source to be OpenCPN repo.  
They are quite a few, change them all.



Once done, done, install.  
Quit YAST.

Launch OpenCPN.

You are done.